



# ALPINE TRAIL MAP



**MT. WASHINGTON**  
ALPINE RESORT

## Download the Mount Washington App!



- Enable push notifications for updates
- Live lift status, weather, and webcams
- Track daily and seasonal performance
- Locate yourself and friends with GPS



## OUR CORPORATE SPONSORS



## SKI & STAY PACKAGES

Stay with Slopeside Accommodation at Deer & Bear Lodge

**BEAR LODGE** 1,2 & 3 bedroom units available



*Ski in & Ski Out*  
Stay Slopeside at Bear or Deer Lodge at Mount Washington Alpine Resort, book online with ease and rest assured your winter family vacation will be memorable. Follow the path to higher ground this winter and stay right on the mountain.

starting from **\$220.00** 1-877-845-4499 | [www.mountwashington.ca](http://www.mountwashington.ca)  
based per person dbl occp taxes extra

**DEER LODGE** 1,2 & 3 bedroom units available



*Ski in & Ski Out*  
Bear & Deer Lodge is the ultimate trifecta of ski-in-ski-out lodging options. Here you will experience our mountain culture to its fullest and be transformed into a snowfall watching, après ski going, first-tracks claiming dynamo.

starting from **\$220.00** 1-877-845-4499 | [www.mountwashington.ca](http://www.mountwashington.ca)  
based per person dbl occp taxes extra

## ALPINE SHOPPING



**outdoor elements**  
A large innovative ski shop, Outdoor Elements features outdoorwear, skis and snowboards from Rossignol, Helly Hansen, and other favourite brands. Inside includes **THE CORNER STORE** A one stop shop for anything from groceries, produce and liquor.



**ROSSIGNOL DEMO CENTRE**  
A full fleet of all-new Rossignol demo skis and boards will be available to take out for a test ride. Professional tuning, boot fitting and repair services are also available.

**6IXPAK**

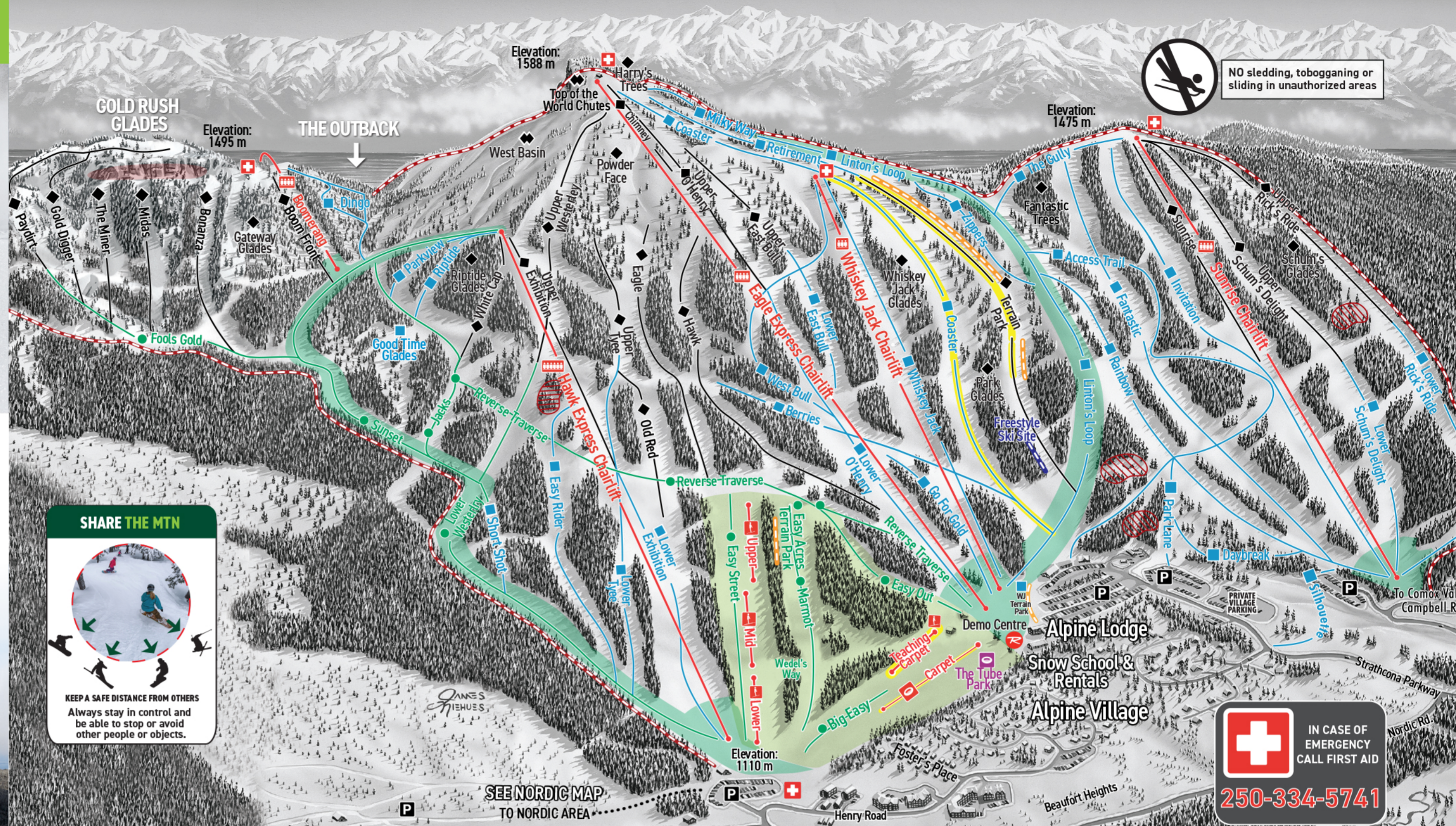
2022.23



- SENIOR
- ADULT
- YOUTH
- CHILD

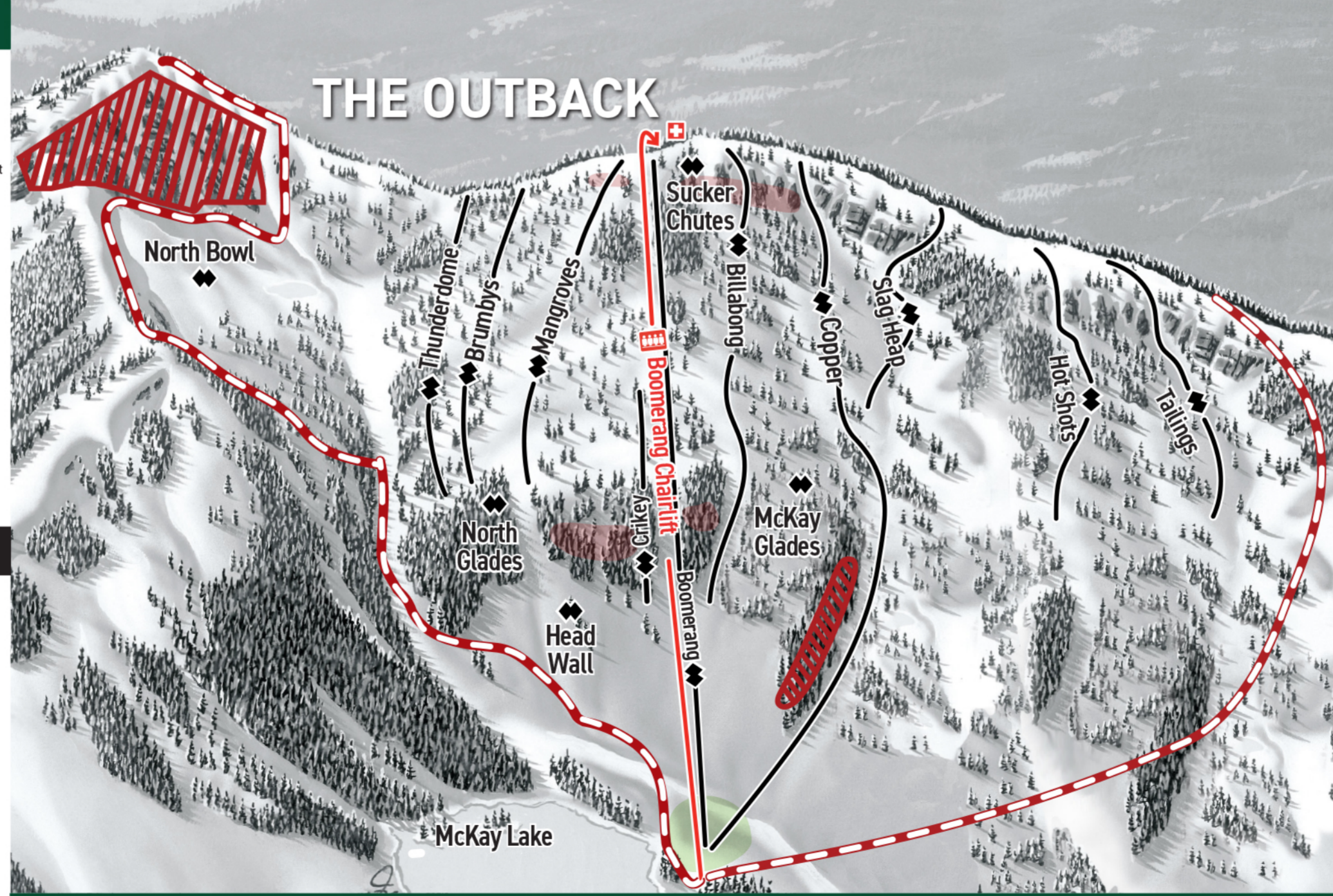
**SHARE THE ADVENTURE.**

Available at: [mountwashington.ca](http://mountwashington.ca) & in stores at Quality Foods



**NO sledding, tobogganing or sliding in unauthorized areas**

**IN CASE OF EMERGENCY CALL FIRST AID**  
**250-334-5741**



## ALPINE LEGEND

- EASIEST / BEGINNER
- MORE DIFFICULT / INTERMEDIATE
- MOST DIFFICULT / ADVANCED
- MOST DIFFICULT / EXPERT ONLY
- NIGHT SKI AREA
- TERRIAN PARK
- FREESTYLE SKI SITE
- SLOW SKIING AREA
- EASY ACRES
- CLIFF AREA
- PERMANENTLY CLOSED AREA
- FIRST AID
- TUBE LIFT
- TUBE PARK
- MAGIC CARPET
- PARKING

## ALPINE RESPONSIBILITY CODE

- It is your responsibility to ski and ride safely at all times.*
1. Always remain in control. You must be able to stop or avoid other people or objects.
  2. People ahead of you have the right-of-way. It is your responsibility to avoid them.
  3. Do not stop where you obstruct a trail or are not visible from above.
  4. Before starting downhill or merging into a trail, look uphill and yield to others
  5. If you are involved in or witness a collision or accident, you must remain at the scene and identify yourself to the Ski Patrol.
  6. Always use proper devices to help prevent runaway equipment
  7. Observe all posted signs and warnings.
  8. Keep off closed trails and closed areas.
  9. You must not use any lift or terrain if your ability is impaired through the use of drugs or alcohol.
  10. You must have sufficient physical dexterity, ability, and knowledge to safety load, ride and unload lifts. If in doubt, ask the lift attendant.

**MT. WASHINGTON**  
ALPINE RESORT • VANCOUVER ISLAND, BRITISH COLUMBIA

888-231-1499  
[mountwashington.ca](http://mountwashington.ca)